

# Accessories



Product Catalogue 2.1 / V1



## **To achieve the best results ...**

... one of the things which will help you to achieve the best results in the welding process is to use professional accessories. When ideally tailored to the task, they provide the basis for operational safety and long service life.

High-quality welding accessories increase the output and reliability of your torch.

To achieve perfect results, don't leave anything to chance.

# Content

## **Welding Accessories**

- Utilities & Tools Page 04-06
- Separating & Coolant liquids Page 07-08
- Adapter pieces, Double nipple & Quick disconnectors Page 09
- Chipping hammers and Wire brushes Page 10-11
- Welding mirrors and Igniters Page 12
- Welding and Work gloves Page 13

## **Welding cable connector system „ABIPLUG“**

- Plug & weld! ABIPLUG – the reliable connection. Page 14-15

## **Electrode holders „DE 2200 / DE 2300 / DE 2400 / DE 2500“**

- The tough classics ... Page 16-17

## **Gouging Torch „K10 / K12 / K12 T / K16 / K16 T“**

- Reliable and safe ... Page 18-19

## **Gouging Torch TEAM BINZEL® „G 3000 / G 4000“**

- Rugged and “Easy to Handle” ... Page 20-22

## **Gouging Electrodes TEAM BINZEL® „ABIARC“**

- Constant quality, less consumption – pure efficiency ... Page 23

## **Coolant Recirculators „WK 23 / WK 43“**

- The portable cooling device for all common applications! Page 24-25

# Welding Accessories

## Utilities & Tools

### Special pliers and wire cleaning sets



- 1 Special pliers (FIX)**  
 No. 1  
 for gas nozzles NS 12-15 mm  
 Part-No.: 193.0013  
 No. 2  
 for gas nozzles NS 15-18 mm  
 Part-No.: 193.0014



- 2 Wire cleaning set red**  
 for steel (set)  
 red for steel (25 pcs.)



- 3 Wire cleaning set white**  
 for Al (set)  
 white for Al (25 pcs.)  
 Part-No.: 193.0001  
 Part-No.: 193.0003  
 Part-No.: 193.0002  
 Part-No.: 193.0004



- 4 Clamp**  
 (12 pcs.)  
 Part-No.: 193.0007

### Handy-Supports, Sharpener, Hose cutters and Gas flow meters



- 5 TIG-Handy-Support (FIX)**  
 without magnet base  
 Part-No.: 193.0019



- 6 MIG-Handy-Support (FIX)**  
 without magnet base  
 Part-No.: 193.0018

**Magnet base** (w./o.fig.) Part-No.: 193.0023



- 7 Sharpener**  
 for plastic liners  
 Part-No.: 191.0064



- 8 Hose cutter**  
 Part-No.: 191.0062

- 9 Gas flow meter**  
 Part-No.: 191.0003

### Accessories case



- 10 Accessories case**  
 small  
 Part-No.: 192.0066  
 big  
 Part-No.: 192.0069

# Welding Accessories

## Utilities & Tools

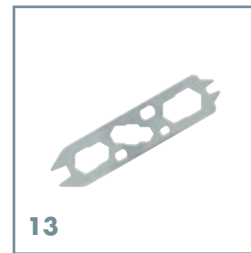
### Special spanners



11



12



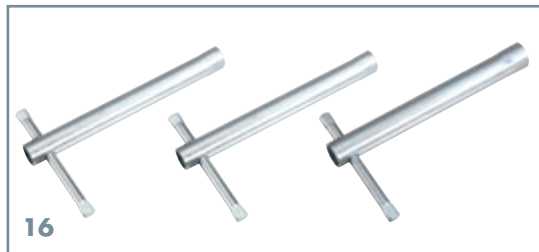
13



14



15



16

#### 11 Spanner

Standard

Part-No.: 191.0001

#### 12 Multiple spanner (10 pcs.)

Part-No.: 191.0015

#### 13 Spanner for ABIMIG®

Part-No.: 191.D045

#### 14 Universal spanner

Part-No.: 750.0125

#### 15 Electrode spanner

Part-No.: 743.0064

#### 16 Socket wrench (L=120 mm)

SW 6

Part-No.: 191.0103

SW 8

Part-No.: 191.0102

SW 10

Part-No.: 191.0104

### Contact tip holder cutter and Adjusting tool

#### 17 Contact tip holder cutter

M10x1

Part-No.: 191.0085

M12x1

Part-No.: 191.0124.1

M14x1

Part-No.: 191.0123.1

#### 18 Adjusting tool

Part-No.: 191.0090



17



18

### Protection covers and Cable assembly holders



19

20



21

#### 19 Protective housing

ABIROB® A

Part-No.: 191.0161

WH (w./o.fig.)

Part-No.: 191.0105

WH-PP (w./o.fig.)

Part-No.: 191.0106

CAT2 (w./o.fig.)

Part-No.: 780.0261

#### 20 Protective tube

2 m length

Part-No.: 191.0079

#### 21 Cable assembly holder

Part-No.: 191.0039

# Welding Accessories

## Utilities & Tools

### Adhesives



**DELO-CA 2902 Special glue** for rubber and plastic.  
Very low viscosity, excellent capillary action and good fitting accuracy.

Part-No.: 191.0004



**DELO-CA 2153 Special glue** for rubber and plastic.  
Highly viscous, all-purpose and gap bridging up to 0.2 mm.

Part-No.: 191.0034



**LOCTITE® 270™-SG**  
LOCTITE® 270™-SG is used for the permanent saving and sealing of threaded connections.

Part-No.: 191.0028



**LOCTITE® 243™**  
LOCTITE® 243™ is used for the permanent saving and sealing of threaded connections, that have to be disassembled with usual instruments.

Part-No.: 191.0032



**LOCTITE® 586™**  
LOCTITE® 586™ is used for the sealing of threaded connections against water, oil and most organic solvents.

Part-No.: 191.0033

# Welding Accessories

## Seperating & Coolant liquids

### Anti spatter liquids

#### 1 Anti spatter spray

Prevents welding spatter sticking in the close-by welding area. Bio-degradable, highly efficient and surface neutral.

Content: 400 ml 12 pcs. Part-No.: 192.0127



#### 2 Super pistol spray

Prevents welding spatter sticking in the gas nozzle area and extends the action time of the gas nozzle. Reducing the costs for spare parts thanks to longer service life of the gas nozzle.

Content: 400 ml 12 pcs. Part-No.: 192.0071



#### 3 Duesofix

Anti spatter paste for reduction of spatter adhesion in the gas nozzle area.

Content: 300 ml 20 pcs. Part-No.: 192.0058

#### 4 Super pistol spray (not inflammable)

Non inflammable, silicon-free spray for protection from spatter adhesion.

Content: 300 ml 12 pcs. Part-No.: 192.D040



#### 5 Anti spatter fluid

Protects from spatter adhesion in the close-by welding area. Highly efficient and bio-degradable it reduces the reworking costs.

1 litre Part-No.: 192.0056

5 litres Part-No.: 192.0052

20 litres Part-No.: 192.0048

200 litres (w./o. fig.) Part-No.: 192.0046



#### 6 Spigot

for 200 litre barrel

Part-No.: 192.0109

# Welding Accessories

## Seperating & Coolant liquids

### Anti spatter liquids

#### 7 Eco-Anti spatter fluid

The ecological anti spatter fluid on herbal basis provides perfect protection of the close-by welding area and reduces the reworking costs. Thanks to its surface neutral characteristics the workpieces can be processed without any problems (varnish, coat etc.).

1 litre	Part-No.: 192.0161
5 litres	Part-No.: 192.0162
10 litres	Part-No.: 192.0159
200 litres (w./o. fig.)	Part-No.: 192.0166
Spigot for	
200 litre barrel (w./o. fig.)	Part-No.: 192.0109



6

#### 8 Spray nozzle

Part-No.: 192.0164

#### 9 Aerosol with 400 ml can – without content (12 pcs.)

Part-No.: 192.0163



7



8

### Coolant liquids

#### 10 Coolant BTC-15

The special coolant from ABICOR BINZEL protects down to -10° C for all liquid cooled welding and cutting facilities.

5 litres	Part-No.: 192.0110
20 litres	Part-No.: 192.0111
200 litres (w./o. fig.)	Part-No.: 192.0112
Spigot for 200 litre barrel (w./o. fig.)	Part-No.: 192.0109



9

#### 11 Coolant BTC-50

The special coolant for all liquid cooled welding and cutting facilities – with very low conductance (< 4µ Siemens). It provides excellent protection against corrosion, is non-inflammable and frost-resistant down to -50° C. The coolant is not declared as „Dangerous Goods“ therefore there are no restrictions concerning transportation or storage.

5 litres	Part-No.: 192.0175.1
20 litres	Part-No.: 192.0176.1
200 litres (w./o. fig.)	Part-No.: 192.0177.1
Spigot for 200 litre barrel (w./o. fig.)	Part-No.: 192.0109



10



# Welding Accessories

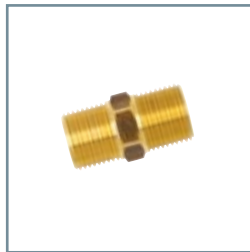
## Adapter pieces, Double nipple & Quick disconnectors

### Adapter pieces, Double nipple & Quick disconnectors



#### Adapter pieces

Adapter pieces M12x1 - G3/8"	Part-No.: 710.0003
Adapter pieces M12x1 - G1/4"	Part-No.: 710.0004
Adapter pieces M10x1 - G1/8"	Part-No.: 710.0005
Adapter pieces G1/8" - G1/4"	Part-No.: 710.0006
Adapter pieces G1/8" - G3/8"	Part-No.: 710.0007
Adapter pieces G1/8" - G3/8" 24 G	Part-No.: 710.0008
Adapter pieces M12x1 - G1/8"	Part-No.: 710.0009
Adapter pieces G3/8" - G5/8" 18 G	Part-No.: 710.0011
Adapter pieces G3/8" - G1/4"	Part-No.: 710.0025
Adapter pieces M12x1 - M10x1	Part-No.: 710.0027
Adapter pieces M10x1 - M12x1	Part-No.: 710.0028
Adapter pieces G1/8" - M12x1	Part-No.: 710.0034
Adapter pieces M14x1 AG - 1/4IG	Part-No.: 710.0035
Adapter pieces M12x1 AG - 7/8"-14G LH A	Part-No.: 710.0037



#### Double nipple

Double nipple G1/8" AG / M12x1 AG SW 12 (MS)	Part-No.: 710.0015
Double nipple G1/8" AG / G1/8" AG SW 12 (MS)	Part-No.: 710.0016
Double nipple M12x1 AG / M12x1 AG SW 12 (MS)	Part-No.: 710.0017
Double nipple G1/4" AG / G1/4" AG SW 14 (MS)	Part-No.: 710.0018
Double nipple G3/8" AG / G3/8" AG SW 17 (MS)	Part-No.: 710.0019
Double nipple M10x1 AG / M10x1 AG SW 10 (MS)	Part-No.: 710.0020



#### Quick disconnectors

Quick disconnecter NW 5 G1/8" IG	Part-No.: 177.0002
Quick disconnecter NW 5 G1/8" AG	Part-No.: 177.0003
Quick disconnecter with G3/8" (ext. thread)	Part-No.: 177.0012
Quick disconnecter NS 5 G1/8" AG w. sliding collar (red)	Part-No.: 177.0013
Quick disconnecter NS 5 G1/8" AG w. sliding collar (blue)	Part-No.: 177.0014
Quick disconnecter NW 5 G1/4" IG	Part-No.: 501.0158
Quick disconnecter w. connecting nut G3/8" w. electr. connection	Part-No.: 501.0163
Quick disconnecter NW 5 M12x1 IG	Part-No.: 501.0176
Quick disconnecter NW 5 5/8"-18G UNF-LH AG	Part-No.: 501.0188
Quick disconnecter NW 5 G3/8" IG	Part-No.: 501.0189
Quick disconnecter for hose Ø = 8 mm	Part-No.: 501.0190
Quick disconnecter w. connecting nut G1/2"	Part-No.: 501.0191
Quick disconnecter w. connecting nut M12x1,5	Part-No.: 501.0194
Quick disconnecter SW 5 w. threaded nozzle Ø = 10 mm	Part-No.: 501.0195
Quick disconnecter NW 5 7/8"-14G UNF IG	Part-No.: 501.0196
Quick disconnecter NW 5 M14x1 IG	Part-No.: 501.0197
Quick disconnecter NW 5 G1/8" AG	Part-No.: 501.0199
Quick disconnecter SW 5 w. threaded nozzle Ø = 6,5 mm	Part-No.: 501.0204
Quick disconnecter for hose Ø = 6,5 mm	Part-No.: 501.0230
Quick disconnecter SW 5 w. spout Ø = 6 mm	Part-No.: 501.0270
Quick disconnecter NW 5 5/8"-18G UNF IG	Part-No.: 501.1795
Spacer ring (20 pcs.)	Part-No.: 501.0304



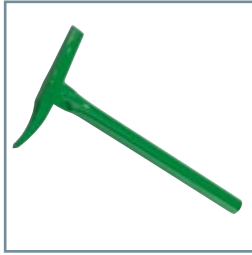
#### Quick disconnectors with lug

Quick disconnecter SW 5 G3/8" IG w. lug	Part-No.: 501.0163
Quick disconnecter SW 5 G1/2" IG w. lug	Part-No.: 501.0198
Quick disconnecter SW 5 7/8"-14G UNF IG w. lug	Part-No.: 501.1797

# Welding Accessories

## Chipping hammers and Wire brushes

### Chipping hammers



#### Chipping hammer Type "Splitter"

- Tunnel handle, green, Ø 21 mm
- Weight: 420 g

Part-No.: 514.0027.1



#### Chipping hammer Type "Grip", small

- Plastic handle, red
- Weight: 380 g

Part-No.: 514.0033.1



#### Chipping hammer Type "D-Style"

- Wooden handle, coated
- Weight: 470 g

Part-No.: 514.0037.1



#### Chipping hammer Type "S-Style"

- Wooden handle, coated
- Weight: 150 g

Part-No.: 514.0038.1

### Wire brushes



#### Stainless steel wire brush

- Rust-free steel wire 1.4301, Ø 0.35 mm
- Wooden handle
- Total length 290 mm

2-rowed

Part-No.: 514.0041.1

3-rowed

Part-No.: 514.0042.1

4-rowed

Part-No.: 514.0043.1



#### Steel wire brush

- Steel wire, Ø 0.35 mm
- Wooden handle
- Total length 290 mm

2-rowed

Part-No.: 514.0044.1

3-rowed

Part-No.: 514.0045.1

4-rowed

Part-No.: 514.0046.1

# Welding Accessories

## Chipping hammers and Wire brushes

### Wire brushes



#### Brass wire brush

- Brass wire curled, Ø 0.30 mm
- Wooden handle
- Total length 290 mm

4-rowed

Part-No.: 514.0047.1



#### Brass steel wire brush

- Steel wire, Ø 0.30 mm
- Wooden handle
- Total length 290 mm

4-rowed

Part-No.: 514.0048.1



#### Brass steel wire universal brush

- Steel wire, Ø 0.30 mm
- Plastic handle, red
- Total length 260 mm

Part-No.: 514.0049.1



#### Steel wire universal brush

- Steel wire, Ø 0.30 mm
- Plastic handle, blue
- Total length 260 mm

Part-No.: 514.0050.1



#### Wire brush 2 in 1, small

- Chipping hammer with integrated steel wire brush
- Plastic handle
- Total length 175 mm

2-rowed

Part-No.: 514.0051.1



#### Wire brush 2 in 1, big

- Chipping hammer with integrated steel wire brush
- Plastic handle
- Total length 265 mm

3-rowed

Part-No.: 514.0052.1

# Welding Accessories

## Welding mirrors and Igniters

### Welding mirrors



#### Magnet-Welding mirror, 400 mm long

- Flexible metal tube, ball joint and magnetic clamp
- Steel mirror 70 x 80 mm

Part.-No.: 514.0053.1



#### Hand-Welding mirror, 400 mm long

- Steel wire handle with clamp and ball joint
- Steel mirror 70 x 80 mm

Part.-No.: 514.0060.1



#### Replacement mirror for aforesaid Hand- and Magnet-Welding mirror

- Steel mirror 70 x 80 mm

Part.-No.: 514.0054.1

### Igniters



#### Hood igniter (incl. 5 stones)

- Nickel plated
- Applicable for all gas types

Part.-No.: 514.0055.1

#### Replacement rocks for hood igniter (5 pcs.)

Part.-No.: 514.0056.1

# Welding Accessories

## Welding and Work gloves

### Welding gloves



4143  
EN 388

#### MIG/MAG-Welding gloves

- Long lifetime thanks to sturdy 1.3 mm thick calf leather as well as high abrasion resistance
- Optimal fit – no pressure marks when bending fingers
- Sewn with triple KEVLAR®-thread for higher seam strength and seam flame resistance
- Long cuffs for wrist and forearm protection against contact heat

Size 10

Part.-No.: 519.0001.1

Size 11

Part.-No.: 519.0002.1



4143  
EN 388



41xx4x  
EN 407

#### MIG/MAG-Welding gloves "Heavy Duty"

- Heat resistant 1.3 mm thick special calf leather, which withstands contact of approx. 250 up to 300° C
- Special sweat absorbant lining for high performance applications
- Back of the hand made of one piece to reduce additional pressure marks by seams
- Optimal fit – no pressure marks when bending fingers
- Sewn with triple KEVLAR®-thread for higher seam strength and seam flame resistance
- Long cuffs for wrist and forearm protection against contact heat

Size 10

Part.-No.: 519.0003.1

Size 11

Part.-No.: 519.0004.1



2111  
EN 388

#### TIG-Welding gloves

- Very soft 0.8 mm thick sheep nappa leather and ergonomical pattern construction provides optimal control of the TIG-Torch
- Optimal fit - no pressure marks when bending fingers
- Sewn with double KEVLAR®-thread for higher seam strength and seam flame resistance
- Long cuffs for wrist and forearm protection against contact heat

Size 10

Part.-No.: 519.0005.1

Size 11

Part.-No.: 519.0006.1

### Work gloves



4143  
EN 388

#### Work gloves

- Long lifetime thanks to sturdy 1.4 mm thick calf leather and high abrasion resistance
- Optimal fit for incomparable comfort
- All seams are double sewn
- Compared to common standard work gloves the fingers of these work gloves are completely leather-protected

Size 10

Part.-No.: 519.0007.1

Size 11

Part.-No.: 519.0008.1

# Welding cable connector system

## ABIPLUG

### Plug & weld! ABIPLUG - the reliable connection.

The new range of **ABIPLUG** welding cable connectors from **ABICOR BINZEL** – designed for safe and correct current transfer in the entire arc welding technology – guarantees maximum operating safety for the equipment and the user. Available as either panel socket / cable plug combination or as panel plug / cable socket combination.

#### The advantages:

- Safe and quick connection – highest twist resistance due to the trend-setting “square end-block-system” of ABICOR BINZEL
- High flash-over resistance – for maximum machine protection
- Easy mounting, optimal connection and excellent power transmission
- Compatible with all commercially available makes – can be built into metal or plastic panels
- Corresponds to EN-standard EN 60 974-12 – the new EN-standard



#### Technical data:

#### Welding cable connector system

Type	Current (A)	Cable (mm <sup>2</sup> )	Mount-Ø (mm)
*10-25	125	bis 10	20.5
*10-25	150	10-16	20.5
*10-25	200	16-25	20.5
*35-50	250	25-35	30.5
*35-50	300	35-50	30.5
*50-70	400	50-70	30.5
*70-95	500	70-95	30.5

\* = **ABI-CM / ABI-IF** or **ABI-CF / ABI-IM**

**ABI-CM** (Cable **M**ale) = Welding cable plug

**ABI-CF** (Cable **F**emale) = Welding cable socket

**ABI-IM** (Insert **M**ale) = Panel mounted plug

**ABI-IF** (Insert **F**emale) = Panel mounted socket

# Welding cable and connector system

## ABIPLUG



### Panel sockets

1	ABI-IF 10-25	Part.-No.: 511.0304
2	ABI-IF 35-50	Part.-No.: 511.0314
3	ABI-IF 50-70	Part.-No.: 511.0330
4	ABI-IF 70-95	Part.-No.: 511.0309

### Cable plugs

5	ABI-CM 10-25	Part.-No.: 511.0305
6	ABI-CM 35-50	Part.-No.: 511.0315
7	ABI-CM 50-70	Part.-No.: 511.0331
8	ABI-CM 70-95	Part.-No.: 511.0342



### Panel plugs

9	ABI-IM 10-25	Part.-No.: 511.0306
10	ABI-IM 35-50	Part.-No.: 511.0316
11	ABI-IM 50-70	Part.-No.: 511.0332
12	ABI-IM 70-95	Part.-No.: 511.0320

### Cable sockets

13	ABI-CF 10-25	Part.-No.: 511.0303
14	ABI-CF 35-50	Part.-No.: 511.0313
15	ABI-CF 50-70	Part.-No.: 511.0329
16	ABI-CF 70-95	Part.-No.: 511.0340



# Electrode holders

## DE 2200 / DE 2300 / DE 2400 / DE 2500

### The tough classics

The Electrode holders are used for manual electrode welding. Manual electrode welding is one of the oldest and most miscellaneous arc welding operations that are still applied today. It stands out due to relatively low investment needs as well as to its universal application possibilities. KURT HAUFE-Electrode holders "DE" are millionfold proven for decades and due to its extremely tough construction they are the optimum tool for the "outdoor professional" - amongst others in shipyards, pipeline construction and bridge building.

Besides the traditional version for connection via cable shoe the new "K"-series offers the possibility of direct crimp connection with the bare welding cable.

### Special features:

- High-tensile, heat insulated handle
- Mechanical and thermal heavy-duty insulating material
- Safe electrode voltage in four chip flutes
- Big electrode and welding cable connection area



### Technical data:

Type	Rating		Electrodes-Ø	Welding cable	Connection bolt <sup>2</sup>
	at 60% duty cycle	at 35% duty cycle			
DE 2200 / K <sup>1</sup>	200 A	250 A	2.0-4.0 mm	25 / 35 mm <sup>2</sup>	M8
DE 2300 / K <sup>1</sup>	300 A	400 A	2.0-6.3 mm	35 / 70 mm <sup>2</sup>	M8
DE 2400 / K <sup>1</sup>	200 A	500 A	4.0-8.0 mm	50 / 95 mm <sup>2</sup>	M10
DE 2500 / K <sup>1</sup>	200 A	600 A	4.0-10.0 mm	70 / 120 mm <sup>2</sup>	M10

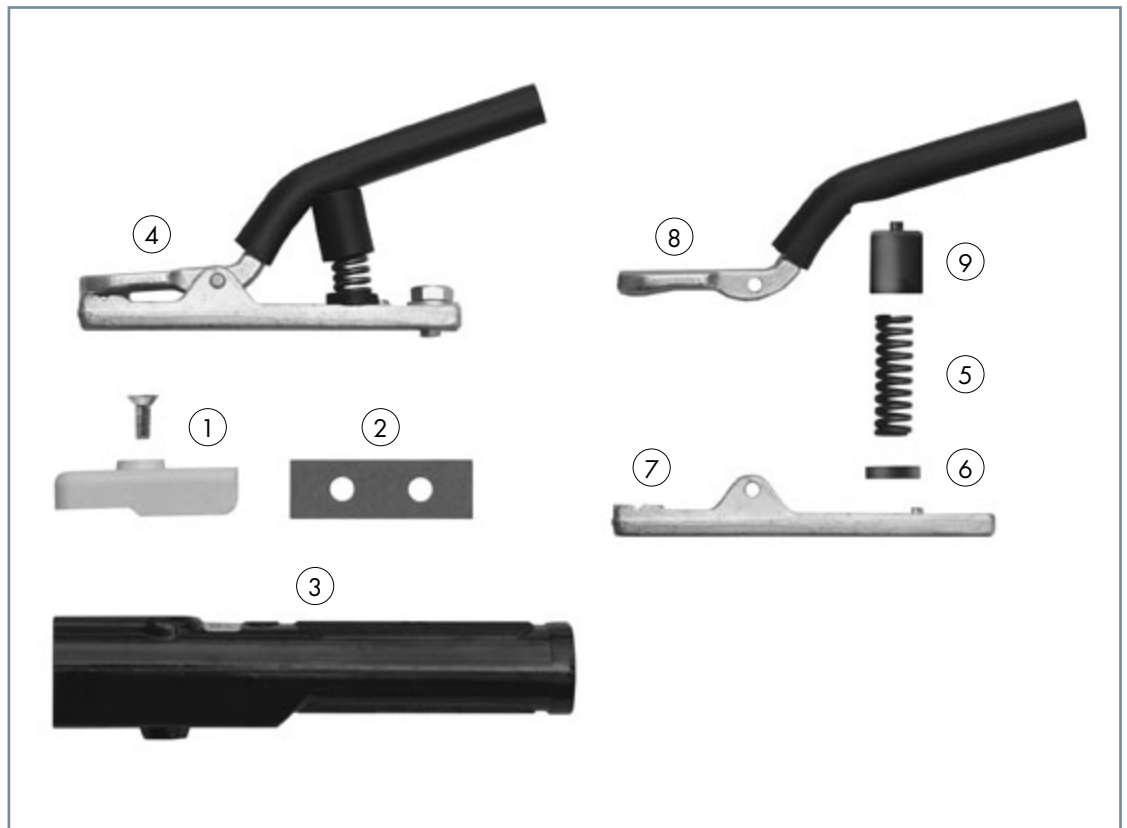
<sup>1</sup> K=Clamp-connection via ferrule

<sup>2</sup> for cable shoe



# Electrode holders

DE 2200 / DE 2300 / DE 2400 / DE 2500



## Electrode holder cpl.

Type	Part.-No.
Electrode holder DE 2200	512.D060
Electrode holder DE 2300	512.D070
Electrode holder DE 2400	512.D080
Electrode holder DE 2500	512.D090
Electrode holder DE 2200 K	512.D470
Electrode holder DE 2300 K	512.D471
Electrode holder DE 2400 K	512.D472
Electrode holder DE 2500 K	512.D480

## Wear parts

Pos.	Description	Part.-No.			
		DE 2200 / K	DE 2300 / K	DE 2400 / K	DE 2500 / K
1	Insulating flange (2 pcs.)	512.D021	512.D031	512.D041	512.D091
2	Insulating plate	-	512.D032	512.D032	512.D032
3	Handle	512.D483.1	512.D486.1	512.D145	512.D145
4	Front part	512.D268	512.D384	512.D272	512.D274
w./o. fig.	Front part „K“	512.D473	512.D474	512.D475	512.D481
5	Pressure spring	512.D025	512.D035	512.D035	512.D035
6	Cap	512.D026	512.D036	512.D036	512.D036
7	Bottom part	512.D276	512.D278	512.D280	512.D282
w./o. fig.	Bottom part „K“	512.D416	512.D418	512.D422	512.D424
8	Lever	512.D028	512.D201	512.D048	512.D098
9	Insulating cap	512.D029	512.D039	512.D039	512.D039
w./o. fig.	Ferrule „K“	511.0048	511.0065	511.0104	511.0104

# Gouging Torch

## K10 / K12 / K12 T / K16 / K16 T

### Reliable and safe ...

The original KURT HAUFE-Gouging Torch is used for gouging, joint preparation, removing of pores and cracks, chamfering, cutting, surface treatment and hole piercing at all metals. They stand out due to its reliability and safety.

### Special features:

- Oval, rugged, heat insulated handle
- Regulation of compressed air via rotary valve
- High air consumption
- High flex cable
- T-version with swivel joint
- Turnable nozzle suitable for round and flat electrodes



### Technical data:

Type	Rating	Duty cycle	Round electrode-Ø	Flat electrode		Compr. air max.	Compr.air connection
				width (mm)	thickness (mm)		
K10	500 A	60%	4-10 mm	15 / 20	4	10 bar	3/8"-18 NPT
K12 / T	600 A	60%	4-12 mm	15 / 20	4-5	10 bar	3/8"-18 NPT
K16 / T	1000 A	60%	8-16 mm	15 / 20 / 25	4-5	10 bar	3/8"-18 NPT

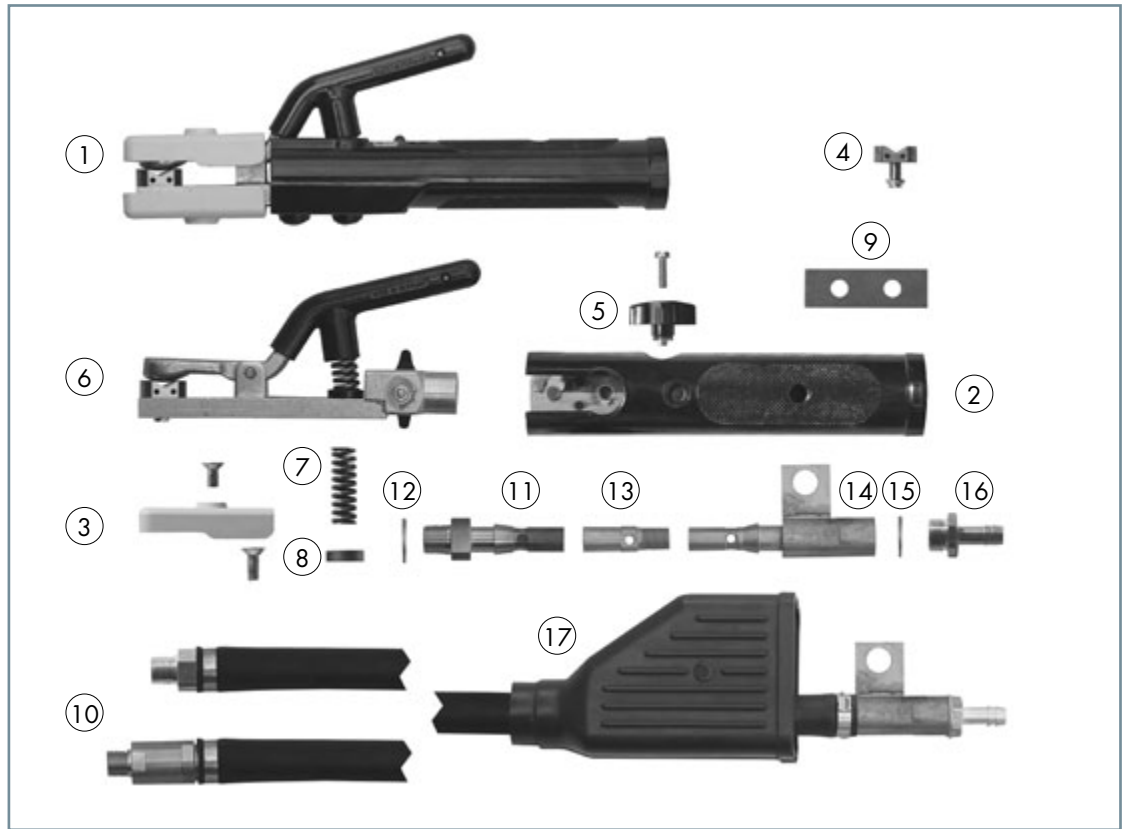
### Gouging Torch cpl.

Type		Part.-No.	
		2.1 m	3.0 m
Gouging Torch K10	cpl. with cable assembly	516.D124	516.D001
Gouging Torch K12	cpl. with cable assembly	516.D125	516.D002
Gouging Torch K12 T	cpl. with cable assembly	516.D154	516.D142
Gouging Torch K16	cpl. with cable assembly	516.D126	516.D003
Gouging Torch K16 T	cpl. with cable assembly	516.D155	516.D150



# Gouging Torch

## K10 / K12 / K12 T / K16 / K16 T



### Wear parts

Pos.	Description	Part.-No.				
		K10	K12	K12 T	K16	K16 T
1	Gouging Torch w./o. tube cable	516.D028	516.D028	516.D028	516.D040	516.D040
2	Handle	516.D011	516.D011	516.D011	516.D011	516.D011
3	Insulating flange (2 pcs.)	512.D091	512.D091	512.D091	516.D042	516.D042
4	Nozzle (for round electrodes)	516.D026	516.D026	516.D026	516.D044	516.D044
5	Cross handle	516.D012	516.D012	516.D012	516.D012	516.D012
6	Front part cpl.	516.D027	516.D027	516.D027	516.D041	516.D041
7	Pressure spring	516.D013	516.D013	516.D013	516.D013	516.D013
8	Cap	512.D036	512.D036	512.D036	512.D036	512.D036
9	Insulating plate	512.D032	512.D032	2x512.D032	512.D032	2x512.D032
10	Tube cable cpl. for 2.1 m	516.D127	516.D129	516.D156	516.D130	516.D157
	Tube cable cpl. for 3.0 m	516.D050	516.D018	516.D143	516.D048	516.D151
11	Connection piece	516.D051	516.D022	-	516.D043	-
12	Space ring (10 pcs.)	516.D053	516.D053	516.D053	516.D053	516.D053
13	Inside connection	-	516.D160	516.D160	516.D161	516.D161
14	Connection piece	516.D135	516.D158	516.D158	516.D158	516.D158
15	Space ring (10 pcs.)	001.D170	001.D170	001.D170	001.D170	001.D170
16	Threaded nozzle	001.D171	001.D172	001.D172	001.D172	001.D172
17	Insulating joint	516.D134	516.D134	516.D134	516.D134	516.D134
w./o. fig.	Special hose for 2.1 m	516.D128	516.D131	-	516.D131	-
	Special hose for 3.0 m	516.D055	516.D021	-	516.D021	-
w./o. fig.	Flat nozzle 15/20	516.D023	516.D023	516.D023	516.D023	516.D023
w./o. fig.	Flat nozzle 15/20 15	516.D024	516.D024	516.D024	516.D024	516.D024
w./o. fig.	Flat nozzle 15/20 20	516.D025	516.D025	516.D025	516.D025	516.D025
w./o. fig.	Flat nozzle 15/20 25	-	-	-	516.D045	516.D045

# Gouging Torch TEAM BINZEL®

## G 3000 / G 4000

### Rugged and easy to handle ...

The gouging torches TEAM BINZEL® G 3000 and G 4000 are safe and easy to handle. They are being used for gouging, weld seam preparing, gouging out of blowholes and cracks, chamfering, cutting, surface removal and keyhole cutting for all common materials.

### Special features:

- Rugged and heat resistant handle
- Turnable nozzle suitable for round and flat electrodes
- High air consumption
- High flex cable
- Swivel joint



### Technical data:

Type	Rating	Duty cycle	Nom. air pressure	Nom. volume flow	Connection air supply
G 3000	max. 600 A	60%	7 bar	ca. 0.60 m <sup>3</sup> / approx.	3/8"-18 NPT
G 4000	max. 1000 A	35%	7 bar	ca. 0.70 m <sup>3</sup> / approx.	3/8"-18 NPT



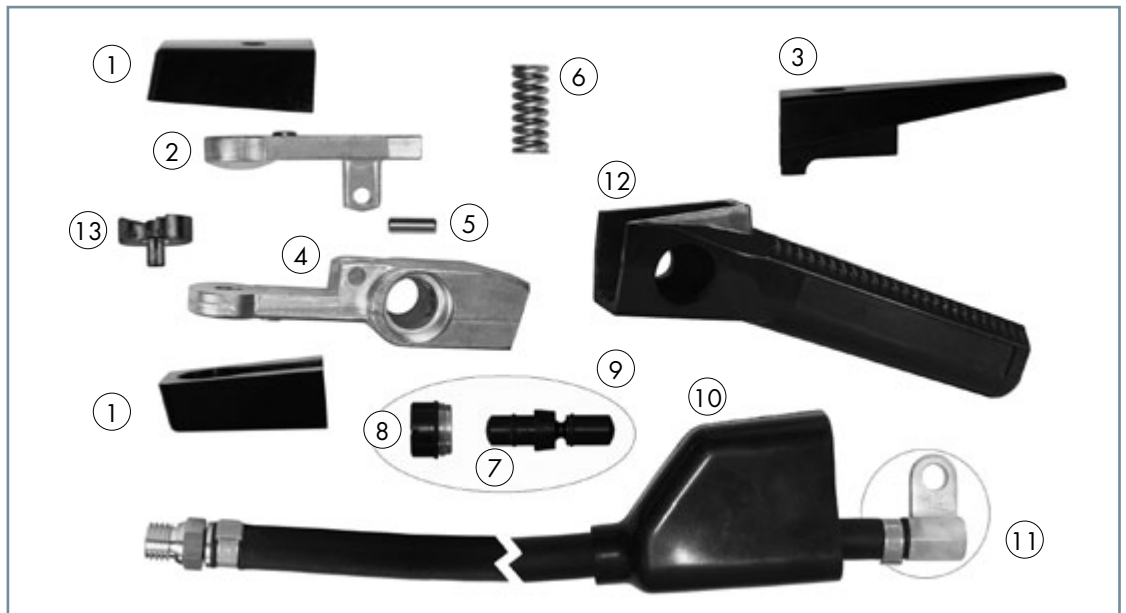
# Gouging Torch TEAM BINZEL®

## G 3000 / G 4000

Gouging Torch  
TEAM BINZEL® G  
3000



Type	Part.-No.
Gouging Torch TEAM BINZEL® G 3000 (torch only)	516.0001
Gouging Torch TEAM BINZEL® G 3000 cpl. with cable assembly (length = 2.1 m)	516.0002
Gouging Torch TEAM BINZEL® G 3000 cpl. with cable assembly (length = 3.0 m)	516.0003
Cable assembly, length = 2.1 m	516.0004
Cable assembly, length = 3.0 m	516.0005



### Wear parts

Pos.	Description	Part.-No.
1	Insulator set (2 pcs.)	516.0006
2	Lever top part	516.0007
3	Lever	516.0008
4	Torch body	516.0009
5	Bolt	516.0010
6	Pressure spring	516.0011
7	Slider	516.0012
7	Slider with O-ring	516.0013
7	O-ring (2 pcs.)	516.0014
8	Fastening nut	516.0015
9	Valve cpl.	516.0016
10	Insulating part	516.0017
11	Connector	516.0018
12	Handle	516.0019
13	Flat nozzle	516.0020

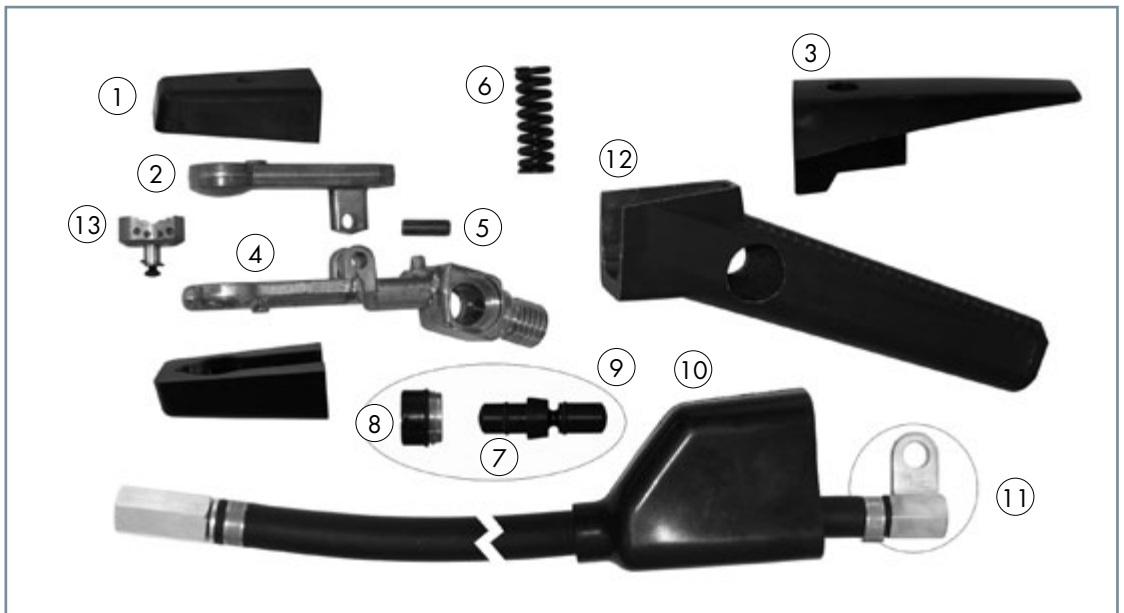
# Gouging Torch TEAM BINZEL®

## G 3000 / G 4000

Gouging Torch  
TEAM BINZEL® G  
4000



Type	Part.-No.
Gouging Torch TEAM BINZEL® G 4000 (torch only)	516.0022
Gouging Torch TEAM BINZEL® G 4000 cpl. with cable assembly (length = 2.1 m)	516.0023
Gouging Torch TEAM BINZEL® G 4000 cpl. with cable assembly (length = 3.0 m)	516.0024
Cable assembly, length = 2.1 m	516.0025
Cable assembly, length = 3.0 m	516.0026



### Wear parts

Pos.	Description	Part.-No.
1	Insulator set (2 pcs.)	516.0027
2	Lever top part	516.0028
3	Lever	516.0029
4	Torch body	516.0030
5	Bolt	516.0031
6	Pressure spring	516.0032
7	Slider	516.0012
7	Slider with O-ring	516.0013
7	O-ring (2 pcs.)	516.0014
8	Fastening nut	516.0015
9	Valve cpl.	516.0016
10	Insulating part	516.0017
11	Connector	516.0018
12	Handle	516.0033
13	Flat nozzle	516.0034

# Gouging Electrodes TEAM BINZEL®

## ABIARC

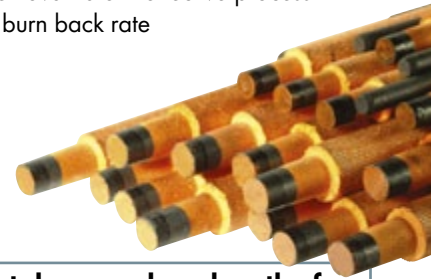
Pure efficiency ...

TEAM BINZEL® gouging electrodes are made of artificial graphite and have a pure copper coating. The gouging electrodes are available in the variety of shapes and diameters to meet the various applications.

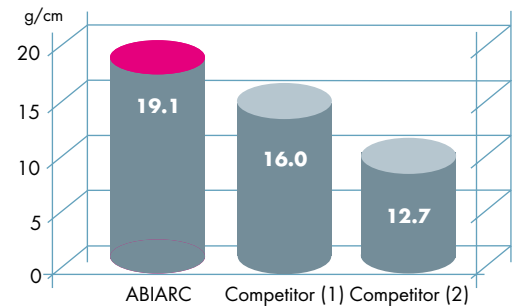


### Special features:

- Pure copper coated – good electric conductivity
- High density (made of artificial graphite) – leads to high metal removal rate
- Less consumption of electrodes – cost reduction
- Constant quality – for a safe process
- High metal removal rate – effective process
- Extreme low burn back rate



Weight of metal removal per length of electrode consumed.



Order overview  
ABIARC Gouging  
electrodes

### ABIARC Gouging electrodes (DC) pointed

Type		Ampere	Pcs.	Part.-No.
4 x 305 mm	(5/32" x 12")	250	50	515.0015
5 x 305 mm	(3/16" x 12")	300	50	515.0016
6.5 x 305 mm	(1/4" x 12")	400	50	515.0017
8 x 305 mm	(5/16" x 12")	500	50	515.0018
9.5 x 305 mm	(3/8" x 12")	600	50	515.0019
13 x 355 mm	(1/2" x 14")	900	50	515.0020

### ABIARC Gouging electrodes (AC) pointed

Type		Ampere	Pcs.	Part.-No.
4 x 305 mm	(5/32" x 12")	250	50	515.0021
5 x 305 mm	(3/16" x 12")	300	50	515.0022
6.5 x 305 mm	(1/4" x 12")	350	50	515.0023
13 x 355 mm	(3/8" x 12")	450	50	515.0024

### ABIARC Gouging electrodes (DC) jointed

Type		Ampere	Pcs.	Part.-No.
9.5 x 430 mm	(3/8" x 17")	600	50	515.0027
13 x 430 mm	(1/2" x 17")	1400	50	515.0028
16 x 430 mm	(5/8" x 17")	1800	50	515.0029
19 x 430 mm	(3/4" x 17")	2000	50	515.0030

### ABIARC Gouging electrodes (DC) flat

Type		Ampere	Pcs.	Part.-No.
10 x 5 x 305 mm		400	50	515.0025
15 x 5 x 305 mm		550	50	515.0026

# Coolant Recirculators

## WK 23 / WK 43

The portable cooling device for all common applications!

- Simple handling - connection (feed and return) via quick-action couplings
- Compact design size - small space requirements
- Sturdy design - indestructible stainless steel tank and sturdy housing
- Service-friendly - clear coolant sight glass



### Technical data:

Type	WK 23	WK 43
Heat exchanger:	2 lines	4 lines
Immersion pump 50 Hz (protection class IP 54)	Delivery height: Hmax. 32 m Flow rate: Qmax. 13.5 litres/min. at G3/8" connector G3/8"	Delivery height: Hmax. 32 m Flow rate: Qmax. 13.5 litres/min. at G3/8" connector G3/8"
Immersion pump 60 Hz (protection class IP 54)	Delivery height: Hmax. 32 m Flow rate: Qmax. 16.0 litres/min. at G3/8" connector G3/8"	Delivery height: Hmax. 32 m Flow rate: Qmax. 16.0 litres/min. at G3/8" connector G3/8"
Cooling cap (RT = 22° C)	approx. 1000 W at 1 litre/min.	approx. 1250 W at 1 litre/min.
Dimensions (LxWxH)	253 x 270 x 460 mm	253 x 270 x 516 mm
Weight:	17 kg	18 kg
Tank capacity:	7 litres	7 litres

### Order overview

Type	Line voltage	Frequency	Power rating	Current consumption	Part.-No.
WK 23	115 V	50 Hz	0.35 kW	6.5 A	850.0214
WK 23	115 V	60 Hz	0.35 kW	6.5 A	850.0135
WK 23	230 V	50 Hz	0.35 kW	3.1 A	850.0137
WK 23	230 V	60 Hz	0.35 kW	3.1 A	850.0210
WK 23	240 / 415 V	50 Hz	0.50 kW	2.6 / 1.6 A	850.0144
WK 43	115 V	50 Hz	0.35 kW	6.5 A	850.0215
WK 43	115 V	60 Hz	0.35 kW	6.5 A	850.0156
WK 43	230 V	50 Hz	0.35 kW	3.1 A	850.0159
WK 43	230 V	60 Hz	0.35 kW	3.1 A	850.0211
WK 43	240 / 415 V	50 Hz	0.50 kW	2.6 A / 1.6 A	850.0165

### Operating instructions:

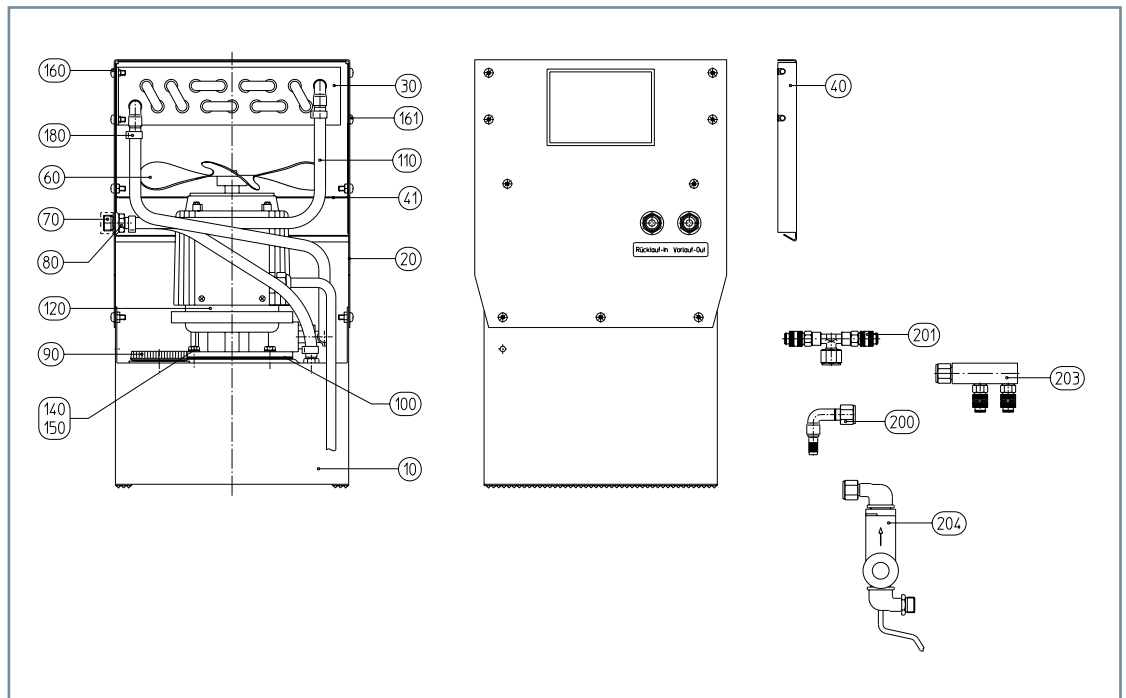
As coolant for all liquid cooled torch systems, we recommend the established ABICOR BINZEL special coolant BTC-15, which remains liquid down to -10° C or the new non-inflammable BTC-50 with very low conductance and frost-resistance down to -50° C. Must be used in conjunction with an adequate motor protection device. A water flow cut-off switch is recommended (Part.-No.: 850.0033)!



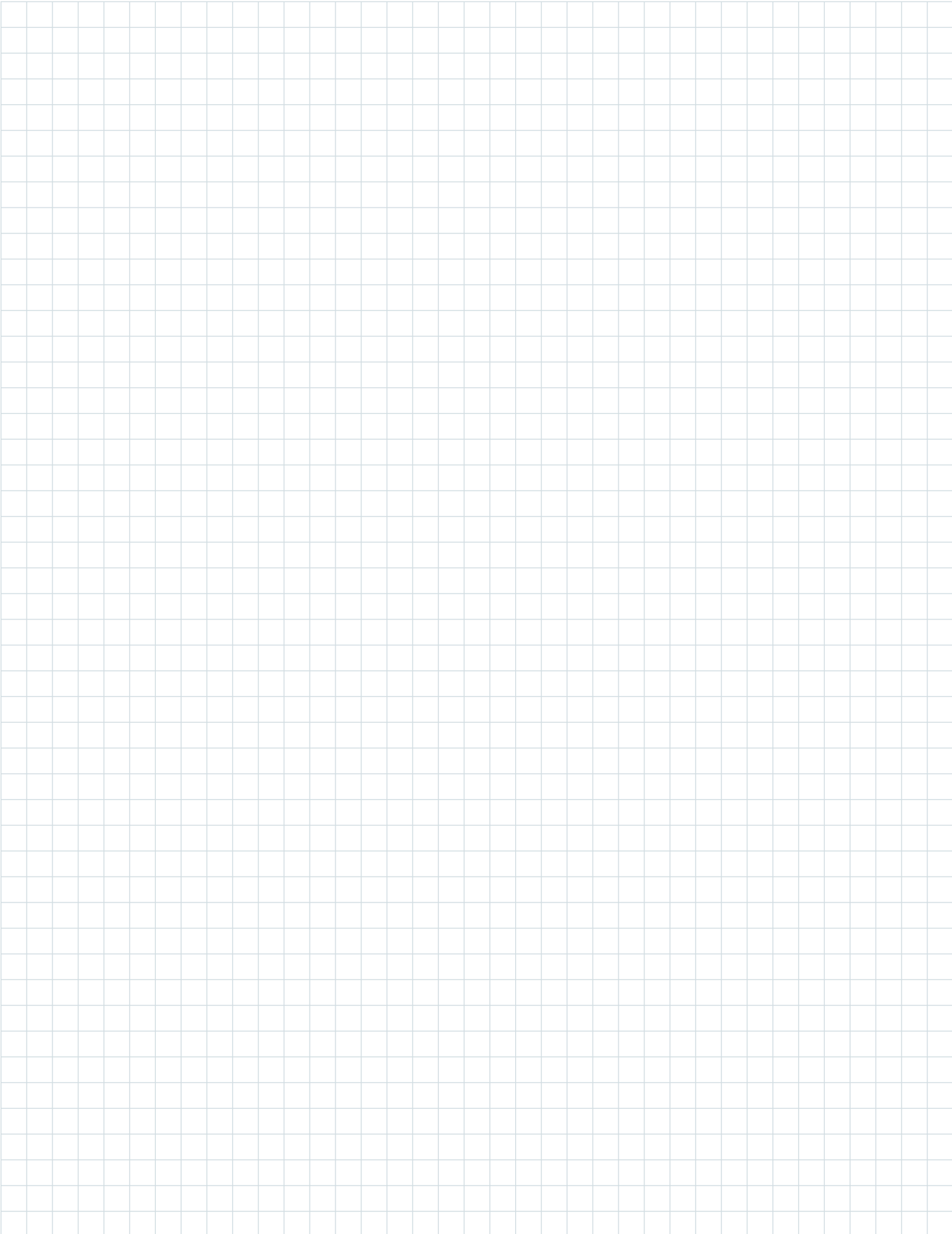
# Coolant Recirculators

## WK 23 / WK 43

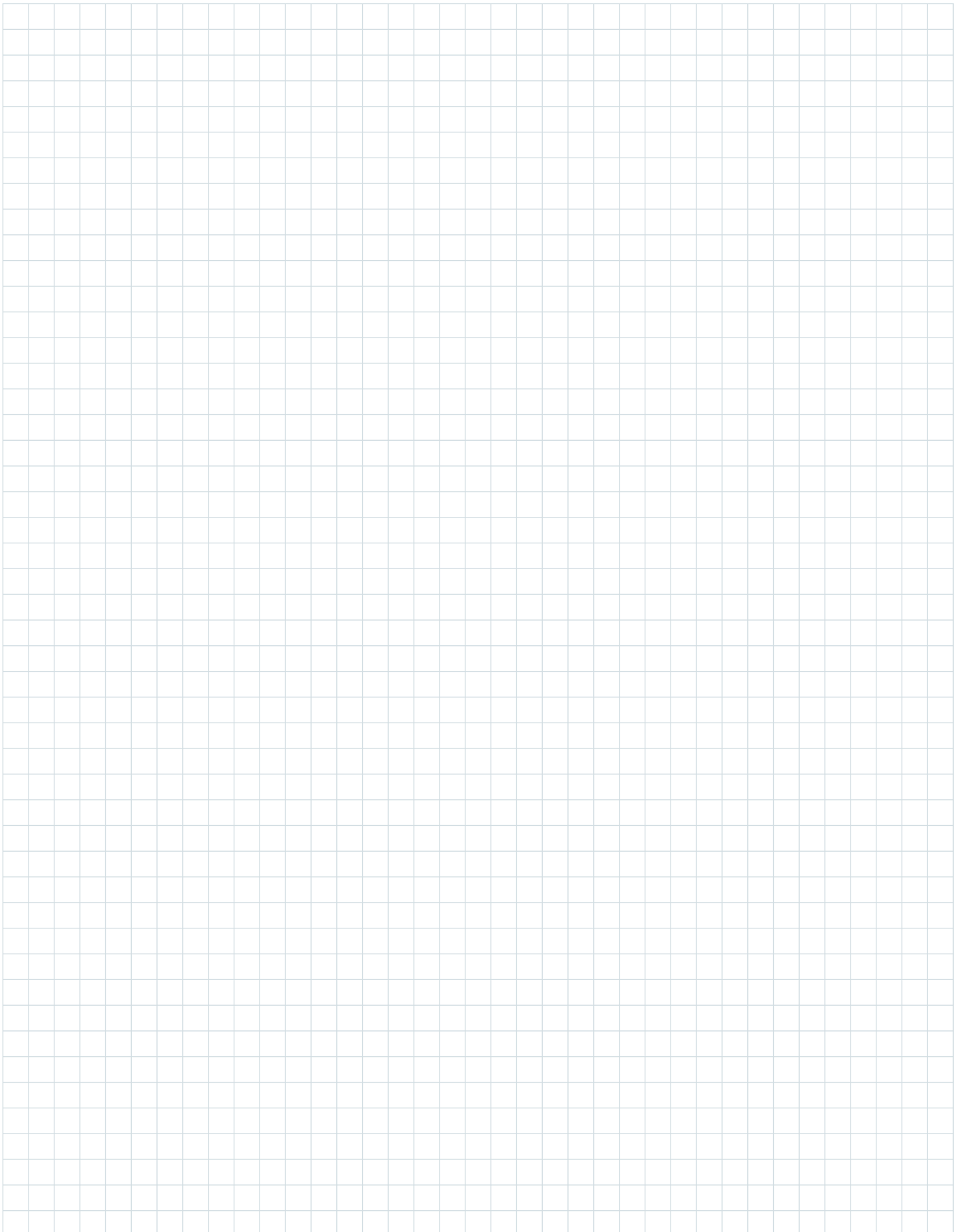
### Wear parts



Pos.	Description	Details	Part-No.
<b>Housing and immersion pump</b>			
10	Tank cpl.		850.0269
20	Enclosure WK 23		850.0016
20	Enclosure WK 43		850.0022
30	Radiator 2-row WK 23		850.0026
30	Radiator 4-row WK 43		850.0027
40	Front panel WK 23		850.0041
40	Front panel WK 43		850.0047
41	Side panel		850.0247
60	Fan blade		850.0053
70	Water fitting G 3/8"		850.0057
80	Nut M12x1		500.0080
90	Tank cap		850.0059
100	Gasket ring		850.0060
110	Hose 3 black Ø 8.5x2.15	100 m	109.0013
120	Submersible pump with motor 115 V / 50 Hz		850.0216
120	Submersible pump with motor 115 V / 60 Hz		850.0202
120	Submersible pump with motor 230 V / 50 Hz		850.0203
120	Submersible pump with motor 230 V / 60 Hz		850.0209
120	Submersible pump with motor 240/415 V / 50 Hz		850.0204
140	Washer Ø 6.0 mm	20 pcs.	001.0148
150	Hexagon head screw M6x20	20 pcs.	009.0161
160	Rounded head screw M5x6	20 pcs.	079.0039
161	Rounded head screw M5x12	20 pcs.	079.0037
180	Hose clamp Ø 14.3 mm with ring (mark 15.0)	20 pcs.	173.0010
<b>Accessories</b>			
200	Fitting (90° angled)		850.0037
201	T-piece (to connect two torches)		850.0189
203	T-piece (90° angled, to connect two torches)		850.0235
204	Water flow cut-off switch with G 3/8" connector		850.0033



# Notizen



## Our product range:

### ■ MIG / MAG

- Welding Torches
- Machine and Special Torches
- Push-Pull Welding Torches
- Fume Extraction Torches
- Central Adaptor System

### ■ TIG

- Welding Torches
- Machine and Special Torches

### ■ PLASMA

- Cutting Torches
- Welding Torches
- Machine and Special Torches

### ■ Robotic Peripheral Equipment

- Robot Torches  
MIG/TIG/Plasma
- Robot Mount CAT2/iCAT
- Torch Change System  
ATS-Rotor
- Tool Change System WWS
- Wire Cutting Station DAV
- Torch Cleaning Station  
BRS-LC, BRS-CC and BRS-FP
- Wire Feeding System MFS-V2

### ■ Welding Accessories

- Coolers
- Welding Cable Plug and Socket
- Anti Spatter Spray and Paste  
and so on ...



Alexander Binzel Schweisstechnik GmbH & Co.KG  
P.O. Box 10 01 53 · D-35331 Gießen  
Phone: +49 (0) 64 08 / 59-0  
Fax: +49 (0) 64 08 / 59-191  
Email: info@binzel-abicor.com

[www.binzel-abicor.com](http://www.binzel-abicor.com)